

# CARBONRT ULTRA

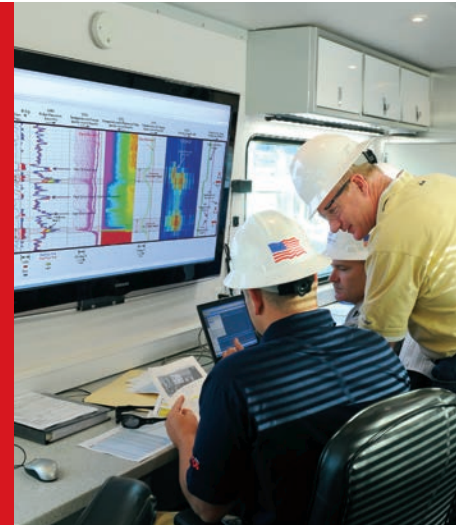
## Inert tracer technology for sand completed wells

### Features

- Inert, permanent tracer that is safe and environmentally friendly—no special equipment, handling, permits or licenses required
- Tracer engineered for effective detection when blended with sand
- Uniform distribution of tracer within each proppant grain—not a coating—can be manufactured into any CARBO ceramic proppant
- Detected using standard neutron logging tools run at standard speeds

### Benefits

- Cost-effective fracture evaluation in vertical and horizontal sand completed wells
- Identifies the proppant coverage (stimulated interval) as well as propped fracture height
- Tracks the amount of proppant near the wellbore so you can understand near-wellbore connectivity and perforation efficiency
- Enables measurements to enhance fracture simulation models, treatment designs and completion efficiency



### Cost-effective evaluation of sand completed wells

CARBONRT® ULTRA inert tracer technology has been developed to enable the cost-effective fracture evaluation of sand completed wells to help you optimize completion efficiency, production and field development.

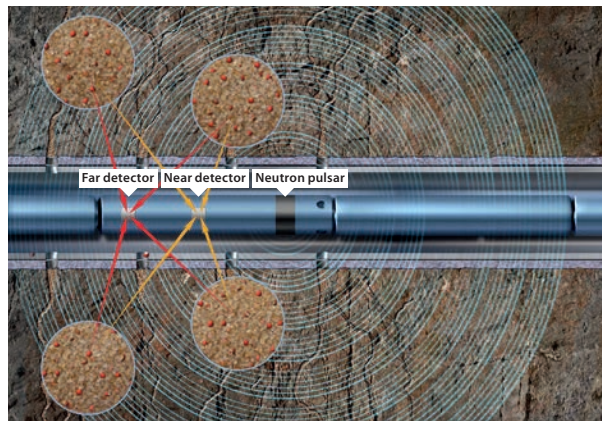
The unique tracer technology enables the effective detection and evaluation of near-wellbore proppant location and quantity using our FRACTUREVISION™ proppant-delivered fracture evaluation service. The accurate measurements from the service allow the evaluation of perforation cluster efficiency and near-wellbore connectivity, which can be used to maximize estimated ultimate recovery (EUR).

An accurate understanding of proppant placement also supports the optimization of stage placement and proppant diversion.

### Enhanced tracer for effective detection within sand completed wells

CARBONRT ULTRA technology is a proppant that is manufactured with a variant of our unique tracer technology specifically engineered for use in sand completed wells. As the tracer is uniformly distributed throughout each proppant grain and integral to the proppant matrix it cannot be dissolved or washed away.

CARBONRT ULTRA technology is blended at an engineered ratio with the sand prior to or during pumping. The tracer provides effective detection of the traceable proppant within the non-traceable sand proppant.



CARBONRT ULTRA technology enables cost-effective fracture evaluation of sand completed wells on a standard neutron logging tools run.

### High quality measurements anytime with standard tools

Our unique technology features an inert traceable material that has a high neutron capture cross section which is detectable with a standard, cost-effective neutron logging tool run. This makes the result a direct measurement of where proppant is located, rather than an interpretation.

With field-proven CARBONRT ULTRA technology, there is no half-life deterioration of the detectable properties. Since the tracer is permanently identifiable, an operator has the flexibility of conducting post-fracture logging months or years after fracturing to quickly identify intervals for restimulation.



Production. Enhanced.

# CARBONRT ULTRA

Inert tracer technology for sand completed wells

## Determine propped fracture coverage and improve perforation efficiency

After fracturing it is critical to determine whether all zones have been stimulated as planned. If a particular zone is not producing, it is important to understand whether it is due to a poor reservoir quality or poor stimulation.

CARBONRT ULTRA technology can be used to evaluate how many perforations have taken proppant and been successfully stimulated in horizontal wells. By varying the number of perforation clusters in each interval, perforation cluster efficiency can be evaluated and adjusted to achieve optimal perforation spacing.

The evaluation of perforations with our technology can be used to develop an understanding of dueling effects that can negatively impact proppant placement and recovery from the reservoir, and to verify the success of diversion operations.

## Understand near-wellbore connectivity to avoid overflushing

The flow of hydrocarbons into the wellbore is only possible if the wellbore is connected to the reservoir. The volume of near-wellbore proppant to a large extent, determines how much production is possible from the reservoir. CARBONRT ULTRA technology can measure the amount of proppant that is near the wellbore to provide you with an understanding of your near-wellbore connectivity.

## Identify optimal stage spacing

In both vertical and horizontal wells, CARBONRT ULTRA technology can be used to pinpoint propped stage intervals and confirm successful stimulation. This information can then be used to identify optimal stage spacing and any potential zones for re-stimulation.

## Increase fracture geometry modeling accuracy

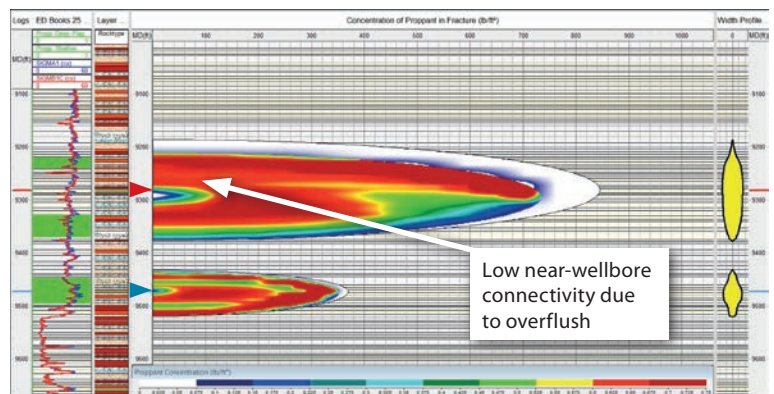
Fracture analysis models are often constrained by the lack or quality of the measurements available. Pressure curves and measurements of pumped proppant volumes can be recorded during stimulation. When combined with propped fracture height and open perforations, measurements obtained with CARBONRT ULTRA technology can enhance the quality of your fracture simulator model and analysis which results in improved fracture treatment designs and stimulation efficiency.

Fracture height is used to calibrate the stresses above and below the formation, and, when used in conjunction with a fracture model, can give an indication of hydraulic fracture geometry. When the actual propped fracture height is known, fracture models can be calibrated with more certainty so that future designs can be modified to provide the optimal drainage from the reservoir.

## Develop integrated solutions to calibrate propped fracture network and SRV models

The integration of proppant placement measurements obtained using CARBONRT ULTRA technology with diagnostic technologies such as microseismic, distributed temperature sensing, distributed acoustic sensing and production logs creates an integrated solution that enables you to calibrate your fracture network and SRV models. The model calibration enables you to calculate the propped fracture network and propped SRV.

Only CARBONRT ULTRA technology tracks proppant location which makes it an integral part of an integrated solution to understand where your treatment went and more importantly, why.



Talk to CARBO to find out how we can help you enhance your production.

[carboceramics.com](http://carboceramics.com)

**CARBO**

Production. Enhanced.