

SUMP BOX

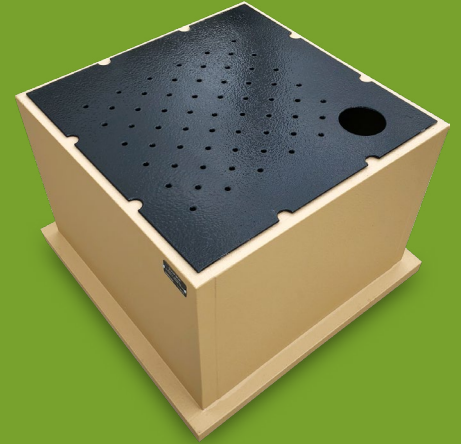
Durable, seamless sub-grade catch basin

Features

- Durable, lightweight engineered design
- Coated with durable, non-permeable polyurea material
- 3/16" metal grating with polyurea coating
- 4" port for cleanout accommodates temporary or permanent sump pump
- Resistant to UV, chemical and temperature extremes
- Versatile sizes—custom sizes available upon request

Benefits

- Seamless lining is guaranteed leakproof
- Easily cleaned
- Precision-fit steel grate prevents workplace trip/fall accidents
- Grate coating provides long-lasting corrosion protection
- Can be used indoors, outdoors, in any environment



Engineered for high performance and versatility

The SUMP BOX catch basin is an ideal vessel for capturing almost any kind of liquid-based substances. With its low-profile, high capacity design, the SUMP BOX basin protects your workspace and the environment in applications that require the containment of waste fluids. SUMP BOX creates an integrated collection point to easily pump out collected rainwater or spills.

Exceptional capability is built into the SUMP BOX basin. It is engineered and constructed with a proprietary modified polyurea coating that provides a seamless, impermeable, maintenance-free layer of protection. Chemically inert, it resists exposure to the harshest UV, chemical and temperature extremes.

The SUMP BOX catch basin will remain completely leakproof, even under exposure to most industrial chemicals and fluids.

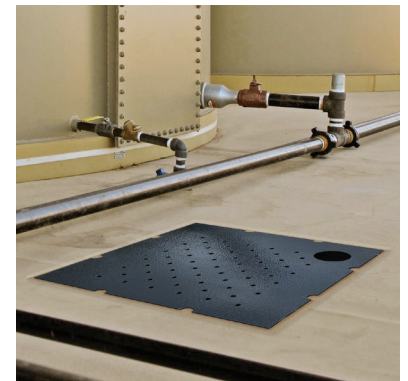
Compact, lightweight, high capacity

The compact, lightweight SUMP BOX basin can be installed by two people. It easily fits into tight spaces, and its low profile minimizes digging and installation time. SUMP BOX comes in various capacities for numerous applications. Custom sizes are available on request.

Inside Dimensions	Capacity
12" x 12" x 8"	5 gallons
36" x 36" x 12"	67 gallons
30" x 30" x 24"	93 gallons

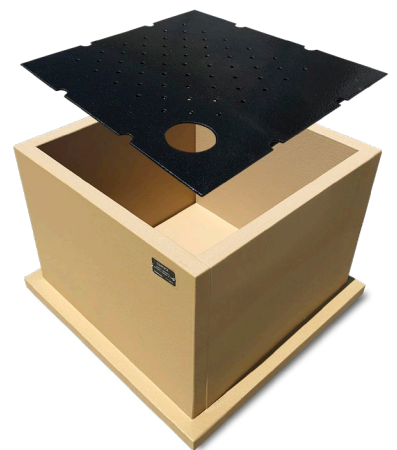
Integrates seamlessly with GROUNDGUARD prefabricated liner

The polyurea coating of SUMP BOX is chemically identical to our GROUNDGUARD liner. Together, they form a bonded, seamless, leakproof fluid containment system.



Easy to use and clean

A 3/16" flat steel grating keeps larger debris, trash and animals out of the catch basin. The 4" port allows easy insertion of vacuum hoses to empty the basin, and the entire grate is easily removable. The SUMP BOX basin and grate are coated with our impermeable polyurea lining, so liquid or solid materials will not stick, making it easy to clean.



SUMP BOX

Durable, seamless sub-grade catch basin

Proven performance in more than 36,000 installations

The proprietary liner technology used in the SUMP BOX basin has been proven in more than 36,000 installations in demanding oilfield applications with no reported failures.



Unmatched versatility

With its chemically inert lining and leakproof construction, the SUMP BOX catch basin can be used in virtually any application where liquids need to be captured and contained, such as:

- Oil and gas wellsites
- Manufacturing
- Agriculture
- Industrial
- Maintenance
- Mining
- Municipal
- Plumbing and sewage
- Processing plants
- Foundry

Elastomer physical properties

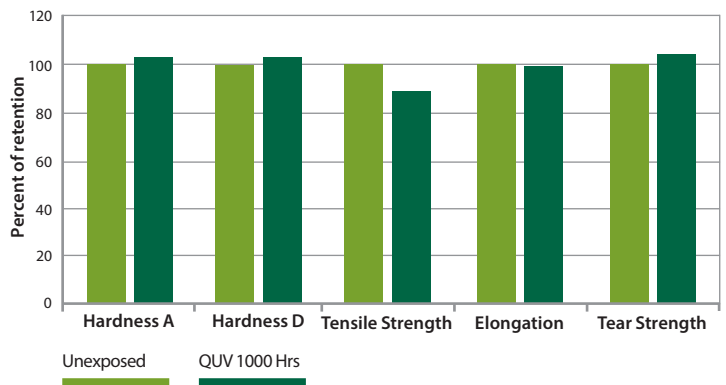
Physical Test	Test Method	Typical Value
Hardness, Shore D	ASTM D-2240	50
Tear strength (pli)	ASTM D-624	380-480
Elongation (%)	ASTM D-412	280-360
Tensile strength (psi)	ASTM D-412	2,500-3,000

The polyurea spray used in our proprietary liner retains its properties even after years of exposure to UV light and extreme weather conditions.

The most durable liner available

The SUMP BOX basin polyurea coating is engineered, tested and proven to provide maximum durability. This includes unmatched impermeability, resistance to corrosive chemicals, UV protection, flexibility under weather extremes (-40°F to 165°F) and puncture resistance.

Weatherability characteristics



Talk to ASSETGUARD to find out how we can help you protect your assets and the environment.

assetguardproducts.com

ASSETGUARD
A CARBO business